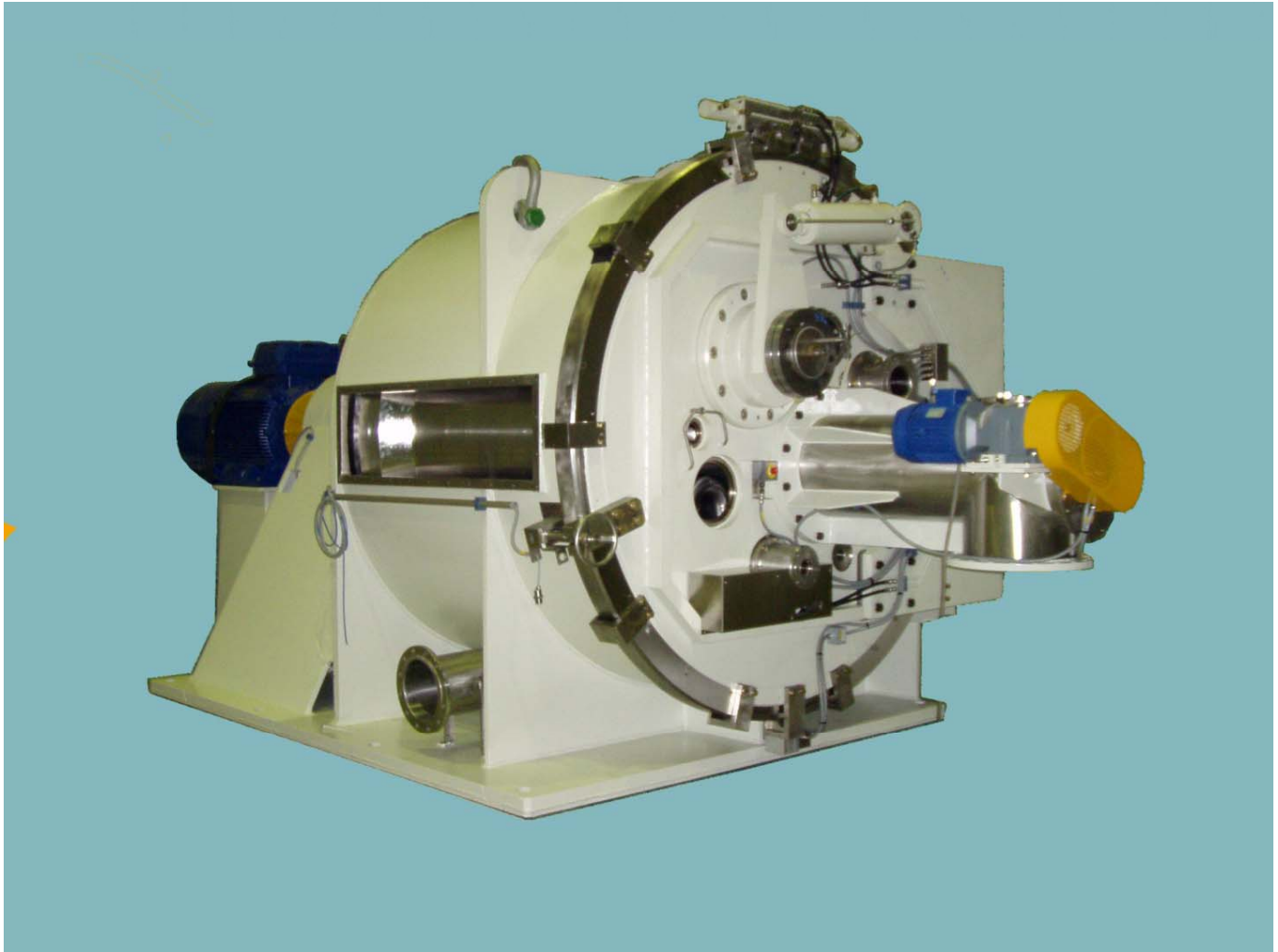


Chemical Peeler Centrifuge *HX model*



For the efficient separation of solids and liquids in a single sealed environment
For chemical applications



COMI CONDOR S.p.A.

I-20019 Settimo Milanese (MI), Via A. Volta 6, ITALY

Phone +39 02 3357991, Fax +39 02 33500439

E-Mail: comi-comm@comicondor.com

www.comicondor.com

Representative in CIS and Baltics:

MediBalt Ltd., 13-1 Priedaines Str., LV-1029 Riga, Latvia

Phone: +371 67373144, Fax: +371 67373143

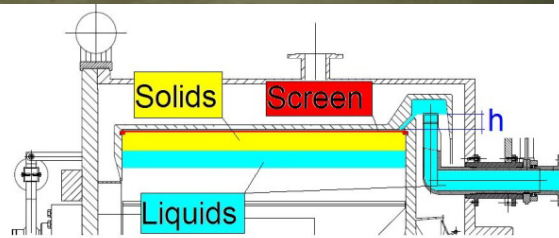
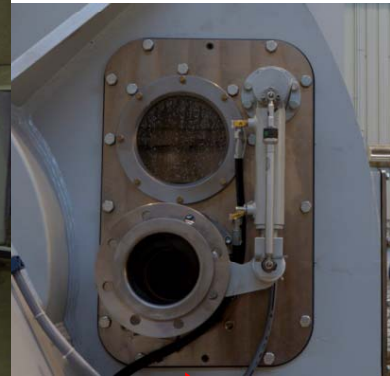
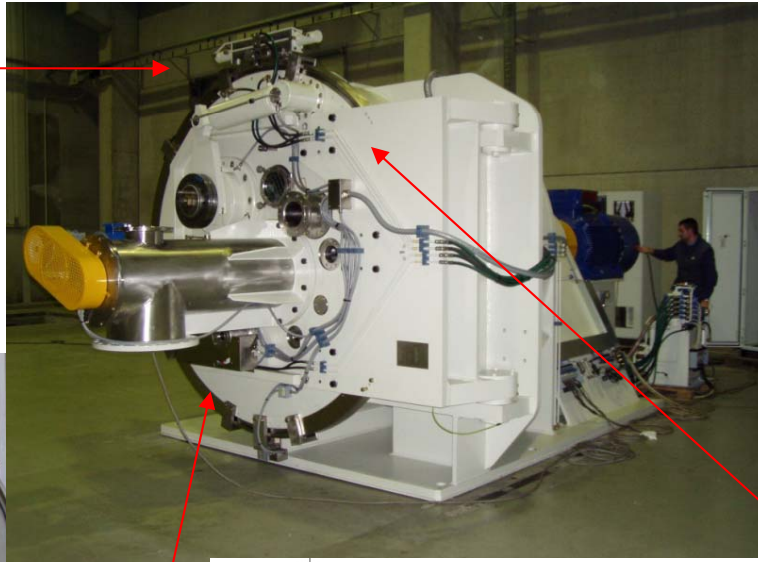
E-Mail: info@medibalt.com

www.medibalt.info/comicondor

Peeler Centrifuge Design & Specifications



Automatic clamping ring



Rotary siphon

$$\Delta p \propto xg \cdot \rho_l \cdot h$$

PROCESS ADVANTAGES

- Rotary siphon
- Back wash
- Skimmer
- horizontal basket assures even loading of cake
- filter medium is easily changed and secured in the basket
- polypropylene or PTFE filters of various weaves and sizes
- Cake peeling at full speed
- "heel" removal assist with optional reverse blow black
- laser cake detector (**external to the process chamber**)
- steep solids discharge chute
- pressure tight to 400 mm H₂O (0.6 psig)
- inert gas purging
- contact materials: 316L, Hastelloy, Inconel, Monel
- surface coating: Halar, ETFE

Skimmer

CONTROL OPTIONS

- complete PLC controls with touch screen interface
- switch between automatic and manual operation
- variable frequency drive (VFD) speed control
- ATEX electrical enclosures
- optional instrumentation integrated into the control system including oxygen monitoring, temperature, pressure, liquid feed flow, N₂ purge flow, effluent particle detection and fluid clarity



AFTER-MARKET SUPPORT

- field service & technical support available 24/7
- mechanical and electrical parts
- process control and maintenance manuals
- certifications and construction documentation
- mechanical and electrical upgrades



Model HX	Basket ϕ, mm	Surface Sqm	Cake Vol., l	Max Load, kg	Max speed RPM	xg	Weight with no motor, kg	With inertia base and motor, kg
500/150	500	0.24	15	19	2,700	2,037	650	1,700
650/180	650	0.37	27	34	2,400	2,093	1,400	3,100
650/320	650	0.65	48	60	2,400	2,093	1,550	3,800
850/400	850	1.06	96	120	1,900	1,715	2,750	6,300
850/500	850	1.33	120	165	1,900	1,715	3,200	7,600
1000/500	1000	1.57	165	206	1,550	1,343	3,600	12,300
1000/650	1000	2.04	215	269	1,550	1,343	4,200	12,800
1250/650	1250	2.55	346	433	1,250	1,092	6,500	16,000
1250/800	1250	3.14	426	532	1,250	1,092	8,000	20,000
1700/900	1700	4.8	902	1,127	1,030	1,000	13,000	35,500
1700/1150	1700	6.14	1,153	1,440	1,030	1,000	15,500	42,000
1800/1250	1800	7.1	1,390	1,739	920	850	25,000	55,000
2000/1400	2000	8.8	1,920	2,400	950	1,000	32,500	70,000